

GENERAL NOTES:

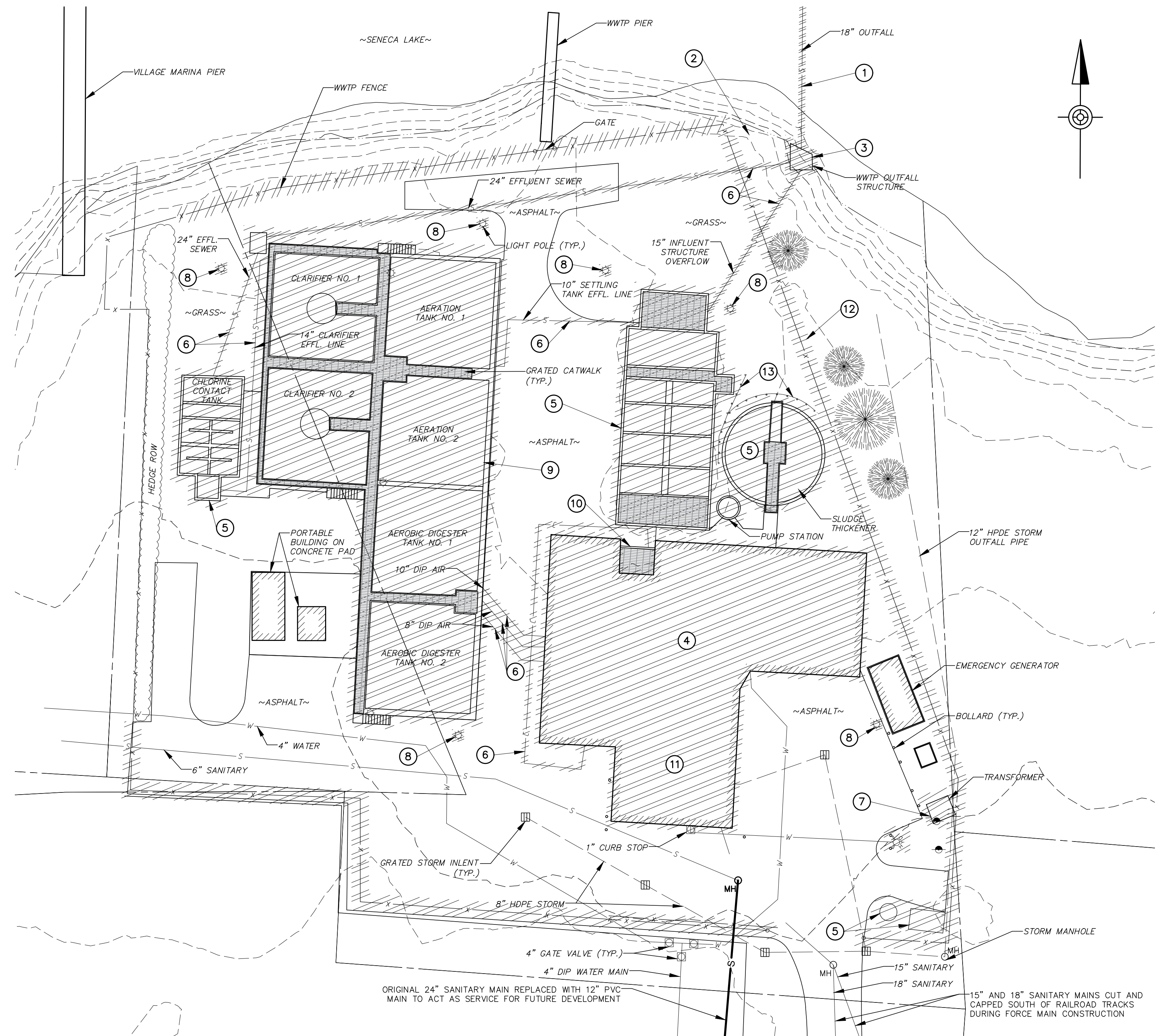
1. PARCEL LINES ARE SHOWN FROM COUNTY TAX MAP DATA AND DO NOT REPRESENT BOUNDARY SURVEY OF THE WASTEWATER TREATMENT PLANT PARCELS.
2. ELEVATION DATA AND CONTOUR INFORMATION ARE SHOWN FROM NYS GIS CLEARINGHOUSE LIDAR INFORMATION.
3. SITE AND UTILITY FEATURES ARE SHOWN FROM AERIAL IMAGERY AND WASTEWATER TREATMENT PLANT RECORD DRAWINGS. SUBSURFACE STRUCTURE/FOUNDATION ELEVATIONS AND DIMENSIONS ARE SHOWN FROM WASTEWATER TREATMENT PLANT RECORD DRAWINGS AND INFORMATION GATHERED DURING THE DEMOLITION PROCESS. LOCATION, DEPTH, AND STRUCTURE COMPOSITION SHOULD BE CONFIRMED PRIOR TO FUTURE DEVELOPMENT.

KEYED DEMOLITION PLAN NOTES:

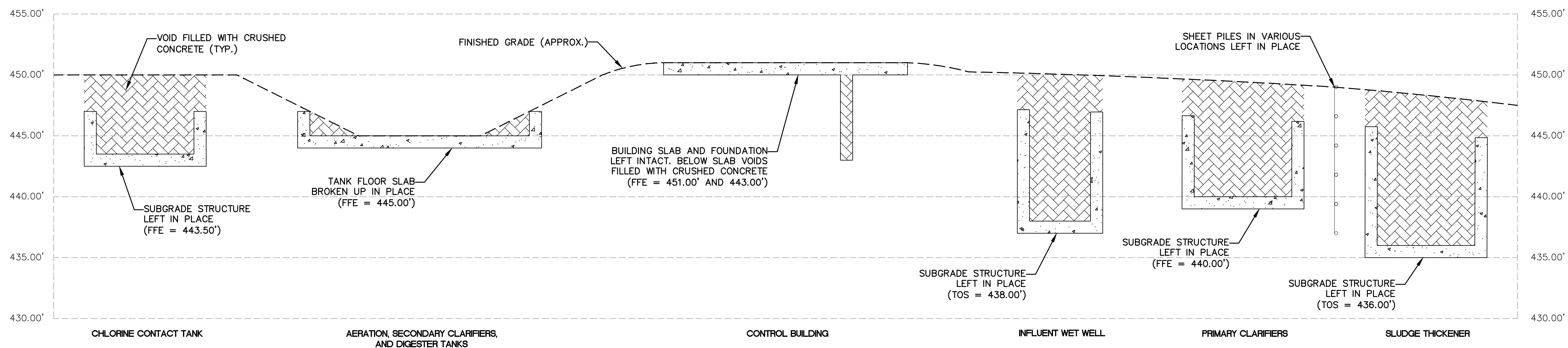
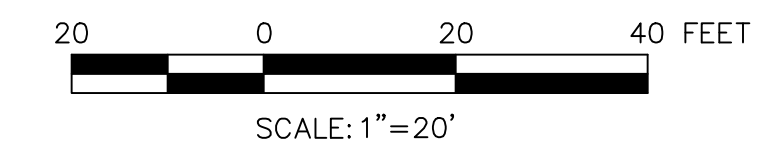
1. OUTFALL PIPING REMOVED IN ITS ENTIRETY.
2. SPDES OUTFALL SIGN REMOVED AND TURNED OVER TO OWNER.
3. OUTFALL STRUCTURE REMOVED.
4. ALL LABORATORY CHEMICALS AND HAZARDOUS MATERIALS REMOVED AND PROPERLY DISPOSED OF. CONTROL BUILDING STRUCTURE DEMOLISHED TO GRADE. INFLUENT AND EFFLUENT LINES REMOVED.
5. STRUCTURE ADEQUATELY DRAINED AND CLEANED. STRUCTURE DEMOLISHED TO $\approx 3'$ BELOW GRADE AFTER CLEANING. REMAINING SUBSURFACE STRUCTURE BACKFILLED WITH ADEQUATELY CRUSHED CONCRETE TO EXISTING GRADE.
6. SITE PIPING REMOVED IN ITS ENTIRETY.
7. ELECTRIC UTILITY DISCONNECTED AND TRANSFORMER REMOVED BY WATKINS GLEN VILLAGE ELECTRIC.
8. SITE LIGHTING REMOVED. ELECTRICAL CONDUIT ABANDONED IN PLACE.
9. STRUCTURE DEMOLISHED TO FLOOR SLAB ELEVATION AFTER ADEQUATELY DRAINED AND CLEANED. FLOOR SLAB COMPROMISED WITH HYDRAULIC HAMMER PRIOR TO BACKFILL.
10. INFLUENT WET WELL CLEANED AND BACKFILLED WITH ADEQUATELY CRUSHED CONCRETE TO EXISTING GRADE.
11. CHANNELS/TROUGHS LOCATED IN CONTROL BUILDING CLEANED AND BACKFILLED WITH ADEQUATELY CRUSHED CONCRETE TO EXISTING GRADE.
12. PERIMETER FENCING REMOVED TO GRADE.
13. EXISTING SHEET PILES LEFT IN PLACE (LOCATIONS SHOWN ARE APPROXIMATE).

LEGEND:

- FEATURE REMOVED DURING DEMOLITION
- VOID FILLED WITH CRUSHED CONCRETE AFTER DEMOLITION
- REMAINING BELOW GRADE STRUCTURE



WASTEWATER TREATMENT PLANT DEMOLITION PLAN
SCALE: 1" = 20'



WASTEWATER TREATMENT PLANT DEMOLITION PROFILE
SCALE: N.T.S.

It is a violation of the law for any person, unless acting under the direction of a licensed Architect, Engineer or Land Surveyor, to alter an item in any way. Plans, maps, specifications, studies, and reports not containing a red ink seal imprint on the cover sheet accompanied by an original signature by the licensed professional may have been fraudulently altered and shall not be considered an original copy. Copyright Protected 2020, Larson Design Group.

NO.	DATE	RECORD DRAWINGS	COMMENTS	ISSUE / REVISIONS
01	05-03-2021	BAS		BY CHRD
02		TWS		



POST-DEMOLITION SITE PLAN
WATKINS GLEN WWTP CLOSURE PLAN
WATKINS-MONTAUR REGIONAL WASTEWATER TREATMENT PROJECT
VILLAGES OF WATKINS GLEN AND MONTAUR FALLS, SCHUYLER COUNTY, NEW YORK
Larson Design Group • Architects Engineers Surveyors
1 West Market Street • Suite 301
Montour Falls, NY 14830
PHONE 607.936.7076 TOLL FREE 877.323.6603
PHONE 607.535.2756 FAX 607.936.7086 • www.larsondesigngroup.com